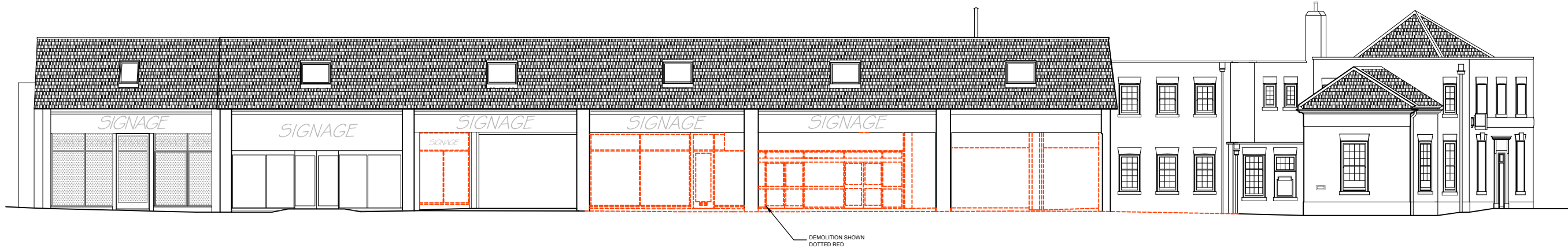




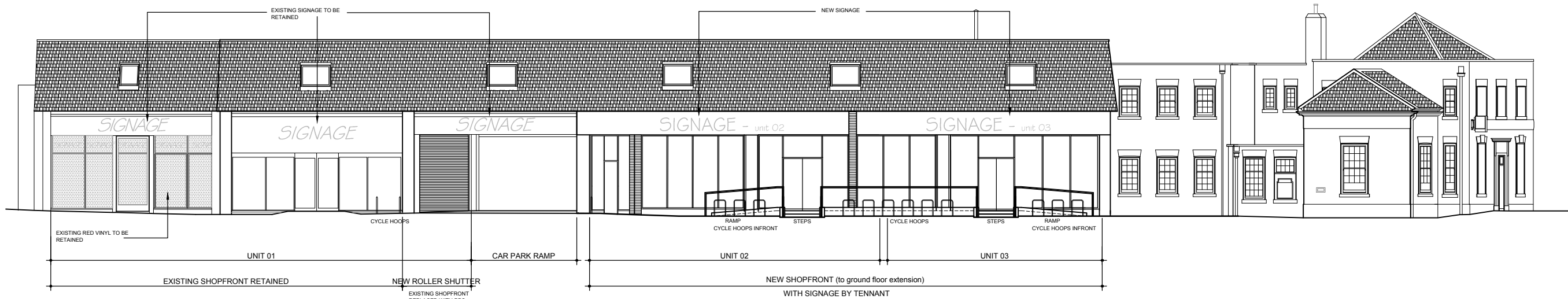
© Mountford Pigott LLP 2012
 Reproduction in whole or in part by any means is prohibited without the prior permission of Mountford Pigott LLP.
 This drawing is only to the stated scale if it is printed correctly. MFLPLP cannot accept responsibility for the incorrect scaling of drawings printed by third parties.
 All dimensions are in mm unless otherwise stated.
 If this drawing forms part of an application for planning permission on behalf of the applicant named below, it shall not be used for any other purpose without the express permission of Mountford Pigott LLP.
 This drawing may incorporate information from other professionals. Mountford LLP cannot accept responsibility for the integrity and accuracy of such information. Any clarification and/or additions that are required pertaining to such information should be sought from the relevant professional or their appointed representative listed below.
 LIST OF INFORMANTS:
 SURVEY: THE GORDON TOMALIN PARTNERSHIP, DRG NO 9498.01
 INFORMANT 2
 INFORMANT 3
 INFORMANT 4
 INFORMANT 5
 REVISIONS
 FOR PLANNING 26.03.14 SN /
 PLANNING APPLICATION 01.04.14 SN /
 SHOPFRONT AND SIGNAGE NOTE 07.05.14 SN /
 UNDATED/ADDED

SOUTH ELEVATION - PHOTO MONTAGE

This drawing contains critical information in red colour. To ensure this information is legible, only print or copy this drawing in full colour.



SOUTH ELEVATION - EXISTING



SOUTH ELEVATION - PROPOSED

A Development by:
Pan Albion Group
 Property Development

CHESTERTON ROAD, CAMBRIDGE

MountfordPigott
 Architecture, Interiors, Design

EXISTING/PROPOSED
 ELEVATIONS 03
 1583-PL016 C

1:100@A1 & 1:200@A3 28.08.13
 DRAWN BY SN